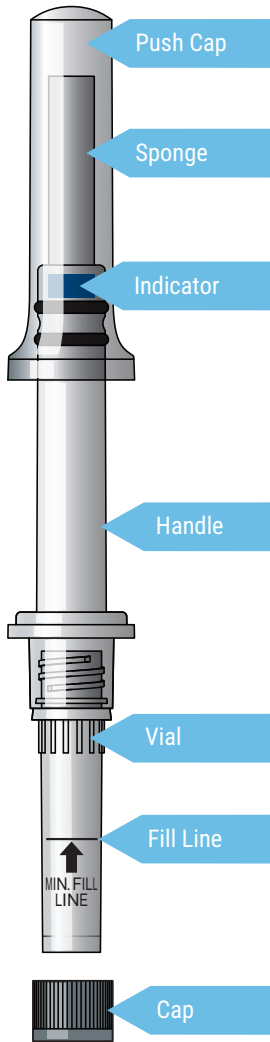


## INSTRUCTIONS FOR USE

For Research Use Only. Not  
For Use in Diagnostic  
Procedures



### Warnings & Precautions

- Do NOT eat, drink, smoke, chew gum or use mouthwash for 30 minutes before collecting your saliva sample.
- Make sure the sponge does not touch any foreign object or surface before, during, or after collection.
- Small parts may pose choking hazard. Children using this device should be assisted by an adult.
- Do not use if you are allergic to polypropylene.
- Do not pull or bite on sponge.
- Do not use if package is damaged.
- Collected specimen is potentially infectious and should be handled with appropriate biosafety practices.

### Indications for Use

*Saletto is intended for the collection of saliva samples for Research Use Only*

**Contents:** 1 collection kit

**Storage:** 15°C ↓ 25°C

REF OFCD-145

**Porex Life Sciences Institute**  
2700 Apple Valley Rd NE  
Suite 10  
Brookhaven, GA 30319

T. +1 877 272 7574  
info@porexlifesciences.com  
www.porexlifesciences.com  
©2024 Porex Life Sciences  
Institute

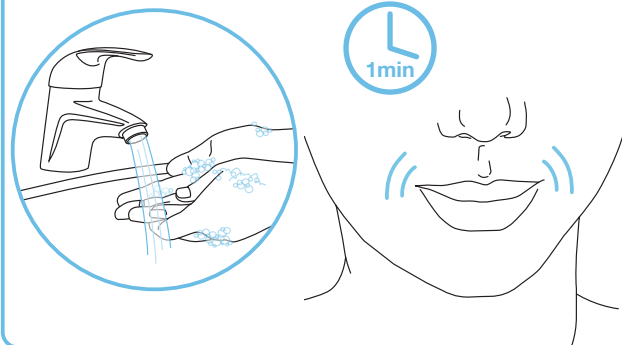
ART-017 issue February 2024

#### Label Legend:

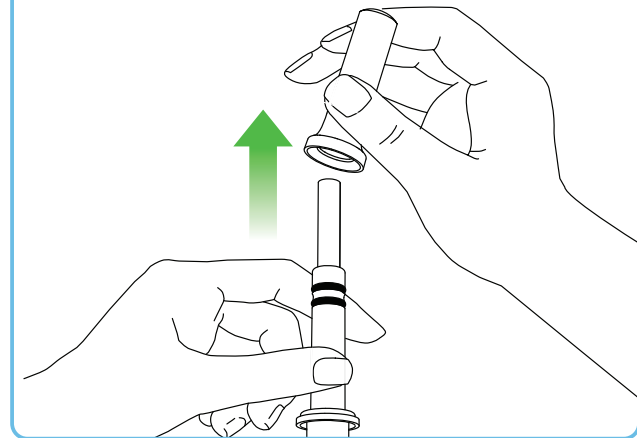
- REF Catalog number
- Temperature limit
- Single use
- Manufactured for

## PREPARE

- Review full instructions before collecting your saliva sample. Check the expiration date of the kit prior to use. Wash hands thoroughly.  
**Gather and hold saliva in mouth for 1 minute.**

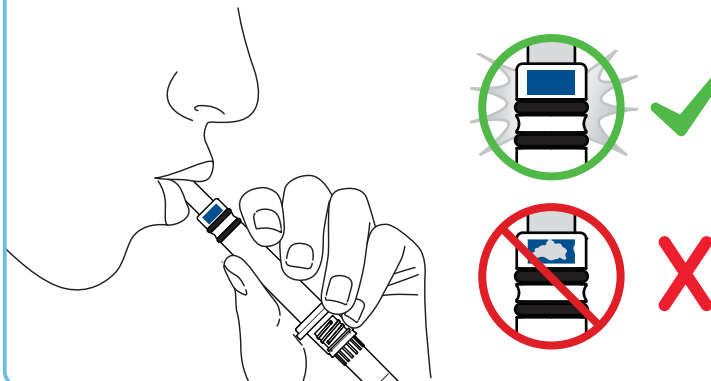


- Remove Push Cap and set aside.

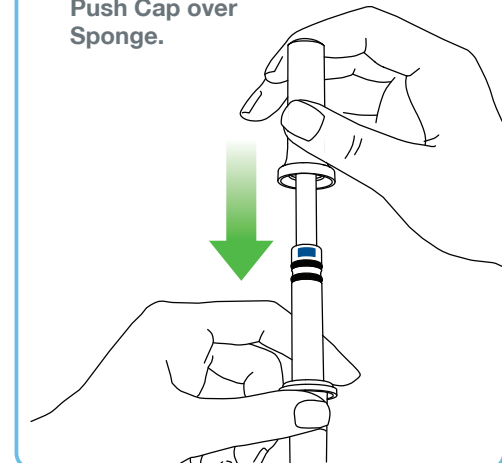


## COLLECT

- Gently place Sponge in mouth and push saliva into Sponge **until Indicator (above black bands) turns fully blue.**  
This typically occurs between 1 - 3 minutes.  
**TIP:** Check blue Indicator with mirror or phone.

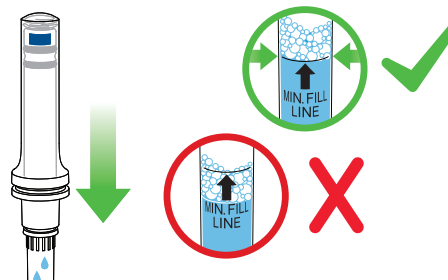


- Keeping Collection Tube upright, place Push Cap over Sponge.

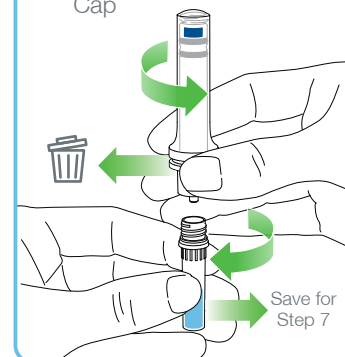


## COMPRESS AND CAP

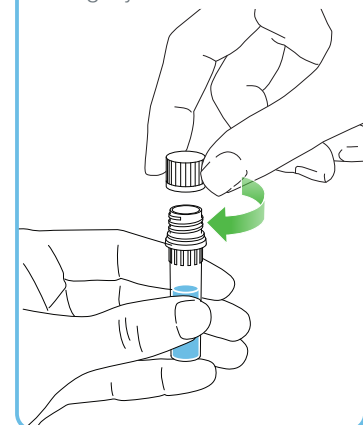
- Identify the Fill Line on the Vial. **Place Push Cap over Sponge and press down completely.**  
Ensure saliva (not bubbles) is above the Fill Line. If saliva is below the Fill Line, remove Push Cap, collect saliva, and compress again.



- Keeping Vial upright, **unscrew Vial from Handle.** Discard ONLY Handle, Sponge, and Push Cap



- Screw Cap onto Vial tightly.



Save for Step 7