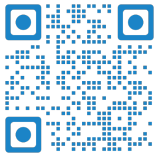
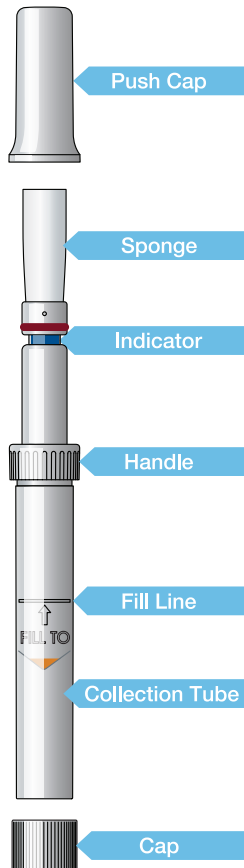


## INSTRUCTIONS FOR USE



Scan me for Video  
Quick Start Guide



### Label Legend:

- Catalog number
- Temperature limit
- Single use
- Manufactured for

Contents: 1 collection kit

Storage: 15°C to 25°C

REF OFCD-320



### Warnings & Precautions

- Do NOT eat, drink, smoke, chew gum or use mouthwash for 30 minutes before collecting your saliva sample.
- Make sure the sponge does not touch any foreign object or surface before, during, or after collection.
- Device intended to be used by professionals and lay users (18+).
- Small parts may pose choking hazard. Children using this device should be assisted by an adult. Lay users who are unable to use the device on their own should be assisted by an adult.
- Do not use if you are allergic to polypropylene.
- Thoroughly wash with water if the gel in the Collection Tube or gel mixed with saliva comes in contact with eyes or skin.
- Do not ingest gel or gel mixed with saliva from Collection Tube.
- Do not pull or bite on sponge.
- Do not use if package is damaged.

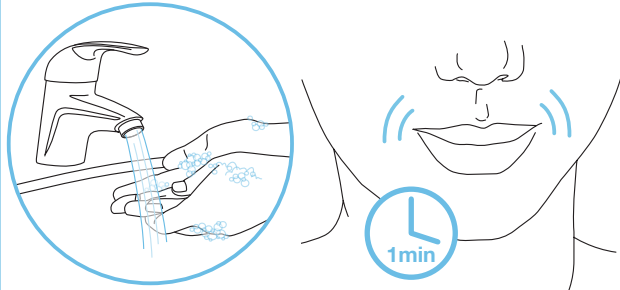
### Indications for Use:

Saletto Oral Fluid Collection Device 320 is intended for the collection of saliva samples for diagnostic testing of human DNA. Saliva samples may be collected by a healthcare professional or non-healthcare professional, such as a lay user. Saliva samples collected using Saletto Oral Fluid Collection Device are stabilized and isolated for use in downstream diagnostic testing applications. Saliva samples collected using Saletto Oral Fluid Collection Device can be transported and stored long term at ambient conditions.

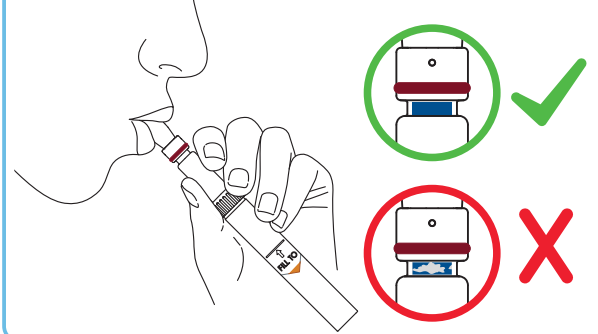
Porex Life Sciences Institute  
2700 Apple Valley Rd NE, Suite 10  
Brookhaven, GA 30319  
T. +1 877 272 7574  
info@porexlifesciences.com  
www.porexlifesciences.com  
©2023 Porex Life Sciences Institute  
ART-010 issue July 2023

## COLLECT

- Review full instructions before collecting your saliva sample. Check the expiration date of the kit prior to use. Wash hands thoroughly.  
**Gather and hold saliva in mouth for 1 minute.**

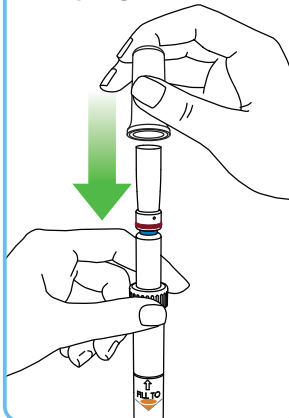


- Gently place Sponge in mouth and push saliva into Sponge **until Indicator (underneath red band) turns fully blue all around.**  
This typically occurs between 1 - 3 minutes.  
**TIP:** Check blue Indicator with mirror or phone.

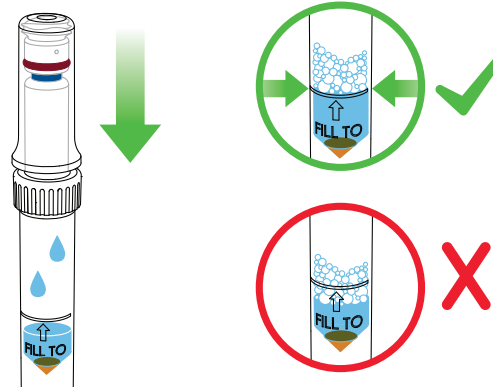


## COMPRESS

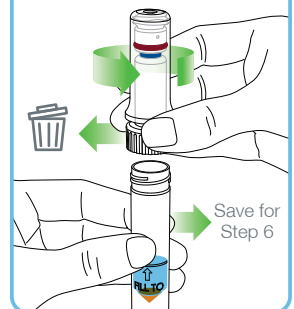
- Keeping Collection Tube upright, place Push Cap over Sponge.**



- Identify the Fill Line on the Collection Tube.** Place Push Cap over Sponge and press down completely. **Ensure saliva (not bubbles) is above the Fill Line.** If saliva is below the Fill Line, remove Push Cap, collect saliva, and compress again.

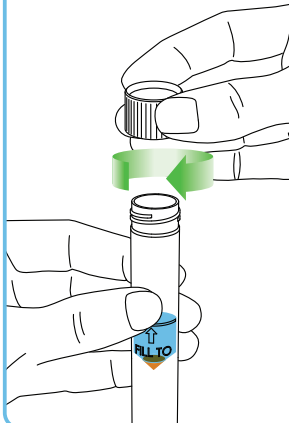


- Keeping Collection Tube upright, **unscrew Collection Tube from Handle. Discard ONLY Handle, Sponge, and Push Cap.**



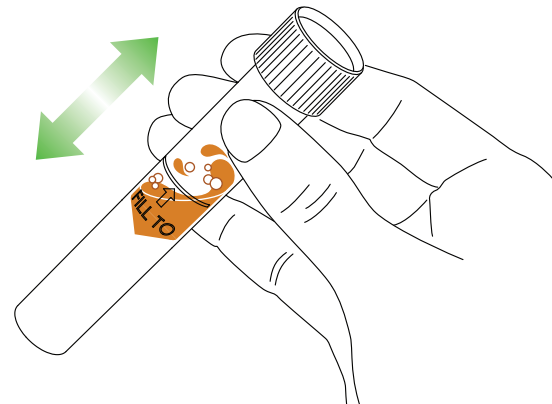
## CAP

- Screw Cap onto Collection Tube.**



## SHAKE

- Shake Collection Tube for at least 15 seconds.** This mixes gel in Collection Tube with saliva.



## SHIP

- Place the capped and secured Collection Tube in the enclosed biospecimen bag.** Refer to additional instructions for how to return your sample by mail.

