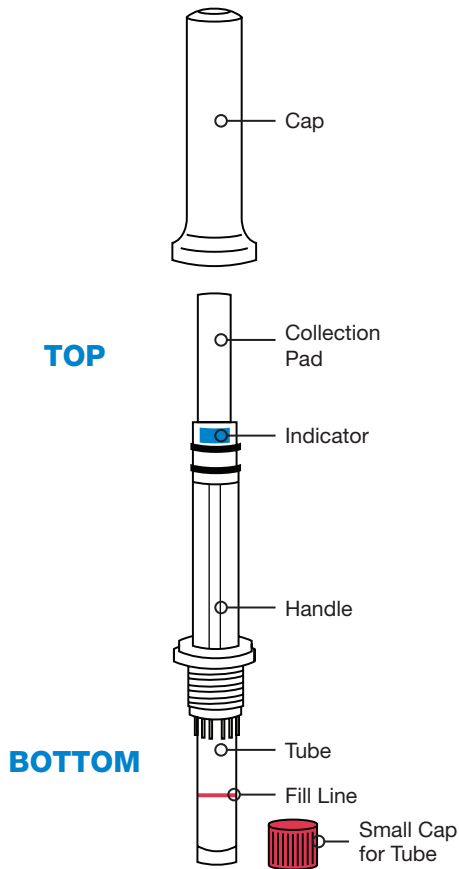


REF OFCD-112



Collection precautions:

Collected specimen is potentially infectious and should be handled with appropriate biosafety practices.

Ship in accordance to applicable regulations covering transport of biological specimens.



Do **NOT** eat, drink, smoke, or chew gum for 30 minutes before giving your saliva sample.

Contents: Contains 1 collection kit.

Warning and precautions: Small parts may pose choking hazard.

Storage: 15-25°C

Summary and explanation of the kit: Saletto™ Oral Fluid Collection Device is a collection kit that provides the materials and instructions for collecting and transporting oral fluid specimens suspected of containing SARS-CoV-2 ribonucleic acid (RNA).

Label legend:

REF Catalog number

⚡ Temperature limit

LOT Batch code

For Investigational Use Only

This sample collection device has not been FDA cleared or approved.

This sample collection device should be used only to collect and transport saliva specimens suspected of containing SARS-CoV-2 ribonucleic acid (RNA), not for any other viruses or pathogens.

Read instructions to prepare device for collection.

Wash hands with soap and water for at least 20 seconds prior to collection.

Use immediately upon opening the package.

Make sure the device and any components does not touch any foreign object or surface before or after collection.

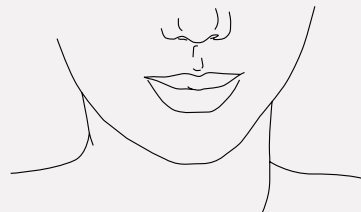
Do not remove or adjust Tube before collection.

Do not use if package is damaged.

Single use device only - once vial is separated, discard device.

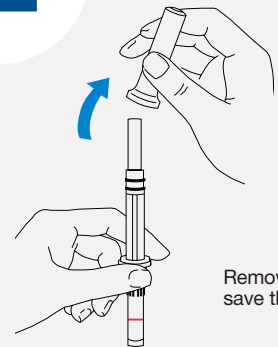
1

Pool Saliva in Mouth for 30 Seconds



2

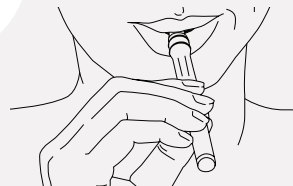
Remove Cap



Remove and save the Cap

3

Collect Saliva with Collection Pad



COLLECTION PAD



90 seconds



Place the entire collection pad above the tongue for **90 seconds**. Do not chew or squeeze the collection pad.

Remove the collection pad to check if the indicator has fully changed color.

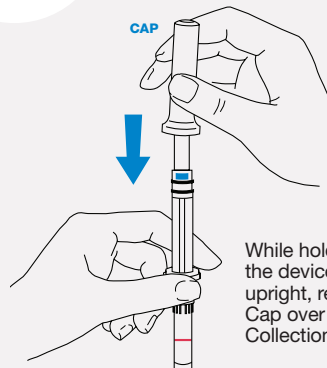
If the indicator is fully activated, proceed to Step 4.

If the indicator is not fully activated, pool saliva for 30 seconds and put device back in mouth for 60s. Check again if indicator has fully activated.

Repeat if needed until indicator has fully activated.

4

Replace Cap over Collection Pad

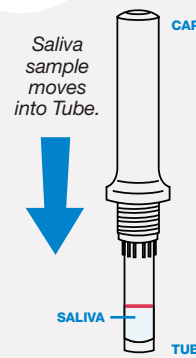


CAP

While holding the device upright, replace Cap over the Collection Pad

5

Compress Collection Pad



Saliva sample moves into Tube.

CAP

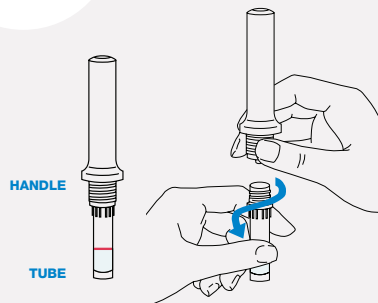
SALIVA

TUBE

Press down slowly in one motion until the Cap fully compresses and forces the saliva into the tube. If saliva collected is below the fill line, repeat steps 1-5. The saliva (not including bubbles) should be at or above the fill line.

6

Unscrew Tube from Handle



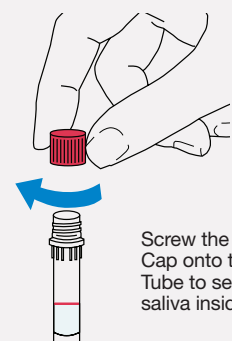
HANDLE

TUBE

While holding the device upright, unscrew Tube from bottom of the Handle.

7

Screw Small Cap onto Tube



Screw the Small Cap onto the Tube to seal the saliva inside.