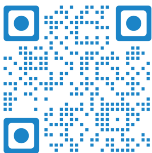
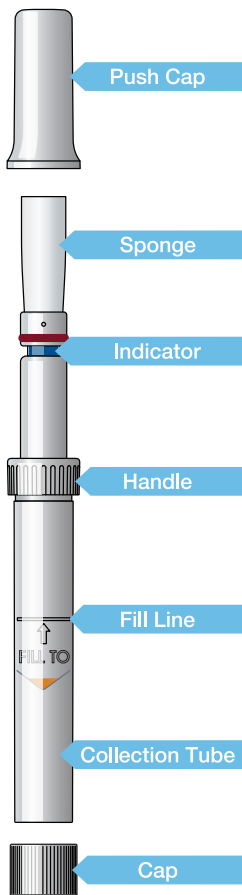


INSTRUCTIONS FOR USE

For Research Use Only. Not For Use in Diagnostic Procedures.



Scan me for Video Quick Start Guide



Label Legend:

	Caution
	Consult instructions for use
	Catalog number
	Temperature limit
	Single use
	Manufactured for

Warnings & Precautions

- Do NOT eat, drink, smoke, chew gum or use mouthwash for 30 minutes before collecting your saliva sample.
- Make sure the sponge does not touch any foreign object or surface before, during, or after collection.
- Small parts may pose choking hazard. Children using this device should be assisted by an adult.
- Do not use if you are allergic to polypropylene.
- Thoroughly wash with water if the gel in the Collection Tube or gel mixed with saliva comes in contact with eyes or skin. Do not ingest gel or gel mixed with saliva from Collection Tube. For more information refer to the MSDS at www.porexlifesciences.com
- Do not pull or bite on sponge.
- Do not use if package is damaged.

Indications for Use:

Saletto DNA is intended for the collection of saliva samples for Research Use Only.

Contents: 1 collection kit

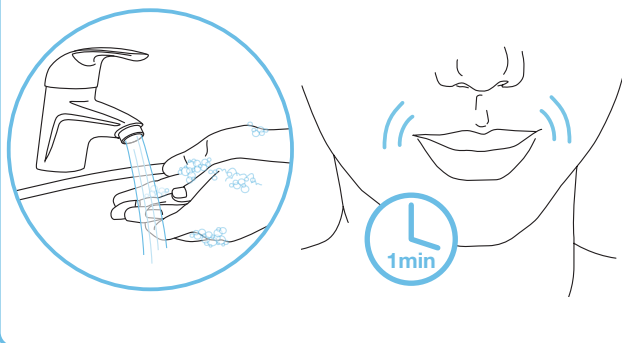
Storage: 15°C to 25°C

REF: OFCD-325

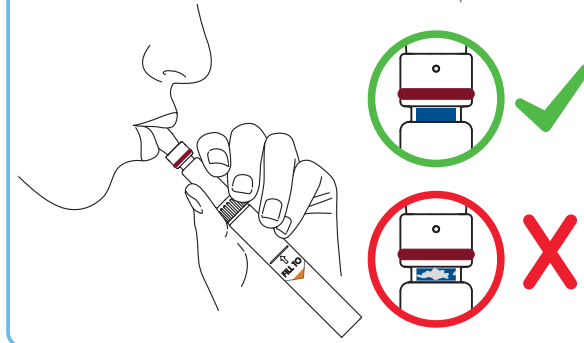
Porex Life Sciences Institute
2700 Apple Valley Rd NE, Suite 10
Brookhaven, GA 30319
T. +1 877 272 7574
info@porexlifesciences.com
www.porexlifesciences.com
©2024 Porex Life Sciences Institute
ART-018 issue February 2024

COLLECT

1 Review full instructions before collecting your saliva sample. Check the expiration date of the kit prior to use. Wash hands thoroughly. **Gather and hold saliva in mouth for 1 minute.**

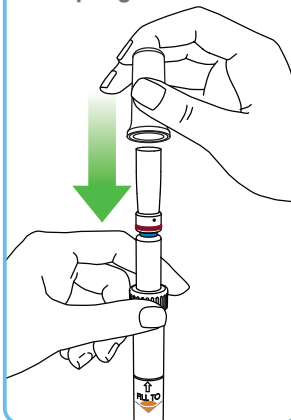


2 Gently place Sponge in mouth and push saliva into Sponge **until Indicator (underneath red band) turns fully blue all around.** This typically occurs between 1 - 3 minutes. **TIP:** Check blue Indicator with mirror or phone.

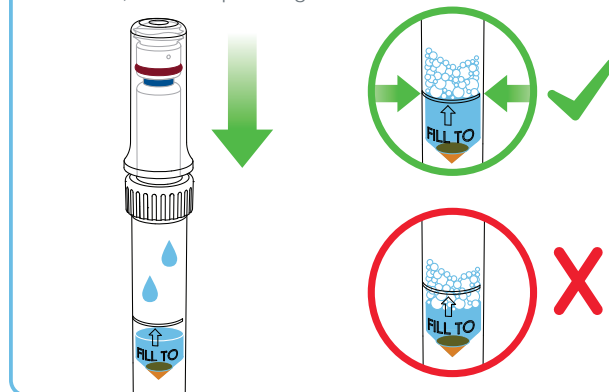


COMPRESS

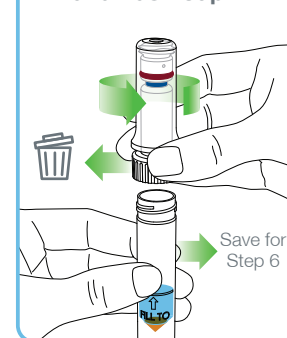
3 Keeping Collection Tube upright, place Push Cap over Sponge.



4 Identify the Fill Line on the Collection Tube. Place Push Cap over Sponge and press down completely. **Ensure saliva (not bubbles) is above the Fill Line.** If saliva is below the Fill Line, remove Push Cap, collect saliva, and compress again.

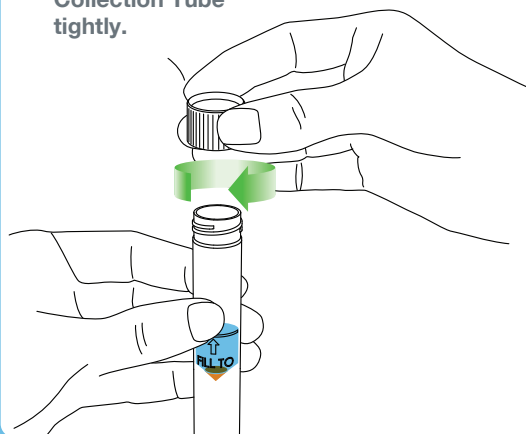


5 Keeping Collection Tube upright, **unscrew Collection Tube from Handle. Discard ONLY Handle, Sponge, and Push Cap.**



CAP

6 Screw Cap onto Collection Tube tightly.



SHAKE

7 Shake Collection Tube for at least 15 seconds. This mixes gel in Collection Tube with saliva.

